

Sample Photo Collection

SHIKISAI

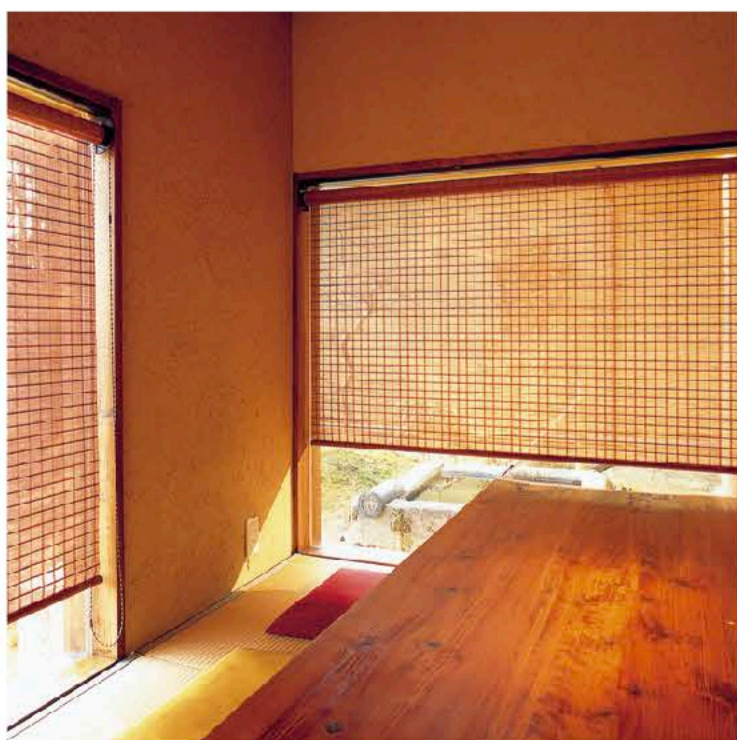
01

Made-to-order sudare
for commercial and
residential spaces

**JAPANESE
SUDARE
COLLECTION
SHIKADA**



CRS chain-type rolling sudare screen Reference **No. 480**



Chain-type rolling sudare screen

This is a chain-operated rolling sudare screen that can be made with 30 types of texture. A rolling mechanism designed specifically for heavy sudare is used, achieving easy raising operation (compared to our other products). A rolling displacement protection plate comes as standard (patented), which prevents uneven rolling and extends the lifespan of the texture. It is equipped with a stopper that can set the maximum and minimum limits of chain operation. The weight bar is made of natural wood, and is equipped with a weight bar cap that covers the cut end. It can be used up to a maximum width of 2,400 mm. Larger products have a double-spring mechanism that makes the raising operation easier.

CRS
Chain-type rolling sudare screen
Reference **No. 451**



CRS chain-type rolling sudare screen Reference No. 482



CRS chain-type rolling sudare screen Reference No. 453



KC chain-type Roman shade sudare Reference **No. 467**



Chain-type Roman shade sudare

This is a chain-operated Roman shade sudare that can be made with 30 types of texture. It is a built-in drum-type, plain-style shade that rolls up in folds. Even though sudare create a strong Japanese impression, the Roman shade style can be used for both Japanese and Western-style decoration. A mechanism designed specifically for heavy texture is used, achieving easy raising operation with gentle opening and shutting. A balance comes equipped as standard. It can be used up to a maximum width of 2,400 mm x maximum height of 2,000 mm.

KC
Chain-type Roman shade sudare
Reference **No. 441**



KC chain-type Roman shade sudare Reference No. 466



MRU cord-type roll-up sudare Reference **No. 410**



Cord-type roll-up sudare

Compatible with the 30 texture numbered between 400 and 499. A roll-up sudare screen, operated with a cord. It features sudare's unique up-and-down style, where the string that works in liaison with the operating cord rolls up the sudare screen from the bottom. This specification places the operating cord near the center of the screen. A highly durable stopper mechanism has been newly added, making it safer by having the stopper mechanism function even if the hand lets go of the operating cord (a first for sudare products).

MRU
Cord-type roll-up sudare
Reference **No. 481**



YRU cord-type roll-up sudare Reference **No. 508**



Cord-type roll-up sudare

Compatible with the six texture numbered between 500 and 599. A roll-up sudare screen, operated with a cord. It features sudare's unique up-and-down style, where the string that works in liaison with the operating cord rolls up the sudare screen from the bottom. The materials include cattail shafts and coarse bamboo, offering a simple look.

YRU
Cord-type roll-up sudare
Reference **No. 508**



SS fixed-type sudare tapestry Reference **No. 488**



Fixed-type sudare tapestry

Compatible with the 30 texture numbered between 400 and 499. The sudare screen is used like a tapestry, with a simple hanging screen. Perfect for room partitions that do not need up-and-down movement, or for small windows. It is the optimal style for making use of the different degrees to which it is possible to see through sudare depending on the design of the texture.

SS
Fixed-type sudare tapestry Reference **No. 488**



TX Texture Reference **No. 504** A special installation example, hung as a ceiling decoration Photographs courtesy of Kengo Kuma and associates



Fixed-type sudare tapestry

Compatible with the six texture numbered between 500 and 599. The sudare screen is used like a tapestry, with a simple hanging screen. Perfect for room partitions that do not need up-and-down movement, or for small windows. The materials include cattail shafts and coarse bamboo, offering a simple look.



Texture

Compatible with the 36 texture numbered between 400 and 599. The sudare screens without upper and lower crosspieces are popular for commercial spaces, as an inner screen for fixtures and as a textural decoration with attention to design.

YSS
Fixed-type sudare tapestry Reference **No. 507**


Combinations of mechanism and texture

Style	Price list	 CRS	 KC	 MRU	 YRU	 SS	 YSS	 TX	 Basket weaving	 Transparency	 最大幅 Maximum width	 Material	 Weight estimate (kg/m ²)
410	A	●	●	●		●		●			2,400	Bamboo	1.11
415	A	●	●	●		●		●			2,400	Bamboo	1.11
440	B	●	●	●		●		●	○		2,400	Bamboo	1.15
441	B	●	●	●		●		●	○		2,400	Bamboo	1.15
450	C	● <small>Maximum height 2,000</small>	●	●		●		●			2,400	Wood	0.81
451	B	●	●	●		●		●			2,400	Bamboo	0.95
452	B	●	●	●		●		●			2,400	Bamboo	0.95
453	B	●	●	●		●		●			2,000	Bamboo	0.70
454	B	●	●	●		●		●			2,000	Bamboo	0.70
455	B	● <small>Maximum height 2,300</small>	●	●		●		●		×	2,400	Bamboo	1.50
456	B	●	●	●		●		●		×	2,400	Bamboo	1.20
457	B	●	●	●		●		●			2,400	Bamboo	0.95
458	B	●	●	●		●		●			2,400	Bamboo	0.95
461	B	●	●	●		●		●			2,400	Bamboo	1.10
462	B	●	●	●		●		●			2,400	Bamboo	1.10
463	B	●	●	●		●		●			2,400	Bamboo	1.10
464	B	●	●	●		●		●			2,400	Bamboo	1.10
465	B	●	●	●		●		●		△	2,400	Bamboo	1.60
466	B	●	●	●		●		●		△	2,400	Bamboo	1.60
467	B	●	●	●		●		●			2,400	Bamboo	1.60
480	B	●	●	●		●		●			2,400	Bamboo	1.00
481	B	●	●	●		●		●			2,400	Bamboo	1.00
482	C	●	●	●		●		●			2,400	Wood	0.75
483	C	●	●	●		●		●			2,400	Wood	0.75
485	B	●	●	●		●		●			2,400	Bamboo	1.05
486	B	●	●	●		●		●			2,400	Bamboo	1.05
487	B	●	●	●		●		●			2,400	Bamboo	1.10
488	B	●	●	●		●		●	○		2,400	Bamboo	1.15
491	B	● <small>Maximum height 2,000</small>	●	● <small>Maximum height 2,000</small>		●		●			2,400	Bamboo	1.3
492	B	● <small>Maximum height 2,000</small>	●	● <small>Maximum height 2,000</small>		●		●			2,400	Bamboo	1.3
501	a				●		●	●			1,100	Cattail	1.18
504	b				●		●	●			1,800	Bamboo	1.15
505	b				●		●	●			1,800	Bamboo	1.15
507	c				●		●	●			1,800	Bamboo	1.40
508	c				●		●	●			1,800	Suzutake bamboo	1.80
509	c				●		●	●			1,800	Suzutake bamboo	2.40

 [CRS]
Chain-type rolling screen

 [KC]
Chain-type Roman shade

 [MRU·YRU]
Cord-type roll-up sudare

 [SS·YSS]
Fixed-type sudare tapestry

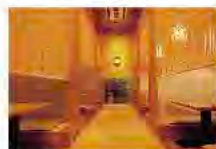
 [TX]
Texture

[HOW TO ORDER]

step1 Using the Sample Photo Collection Shikisai 01 (this booklet):

Choose the raising and lowering style

Chain-type rolling screen



P01

Cord-type roll-up sudare



P05



P06

Chain-type Roman shade



P03

Fixed-type sudare tapestry and texture



P07



P08

step2 Using the Texture Sample Sheet Shikisai 02:

Choose the texture

Texture samples Price rank Price list **A** Price list **B** Price list **C**

410-492

30 types of texture
Bamboo and wood

Texture samples Price rank Price list **a** Price list **b** Price list **c**

501-509

6 types of texture
Cattail and bamboo

step3 Using the Product Specifications Shikisai 03:

Choose the decorative style for your property

How to fill out an order

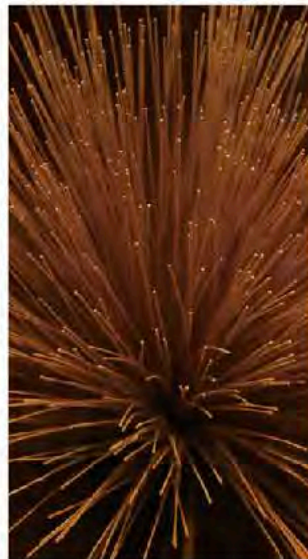
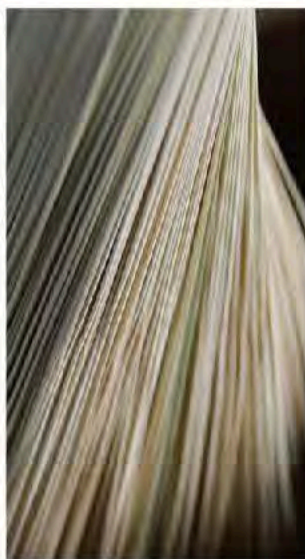
© Download the order sheet from our website,
and email it to us. <https://shikada.co.jp/en/dl> intl@shikada.co.jp

Example

① CRS ② 410 (M1) ③ 1800W ④ 2400H ⑤ Top ⑥ Right ⑦ 4pcs

① Raising and lowering style ② Reference No ③ Manufacturing width (W)
④ Manufacturing height (H) ⑤ Direction ⑥ Ball chain ⑦ Units

*Enter (M1) after the "②Reference No," if fire protection property is required.



JAPANESE SUDARE SHIKISAI COLLECTION

Sample Photo Collection

SHIKISAI

01

 Shikada Sangyo Inc.

428 Ohta, Hirokawa-machi, Yame-gun, Fukuoka, 834-0114, Japan
TEL.+81-943-32-1141 FAX.+81-943-32-3500
<https://www.shikada.co.jp/en> E-mail intl@shikada.co.jp

Printed in January 2020