

SHIKADA WOVEN

---

# Technical Guide

SHIKADA SANGYO INC.



世界をもてなす日本のこころ

SHIKADA SHITSURAI

NATURAL INTERIOR MATERIAL



YouTube

# SHIKADA WOVEN

## Technical Guide

SHIKADA SANGYO INC.



SHIKADA SHITSURAI SHOWROOM / Lounge

# Contents

**1** Production procedures for Sudare texture

**2** SHIKADA WOVEN Texture types

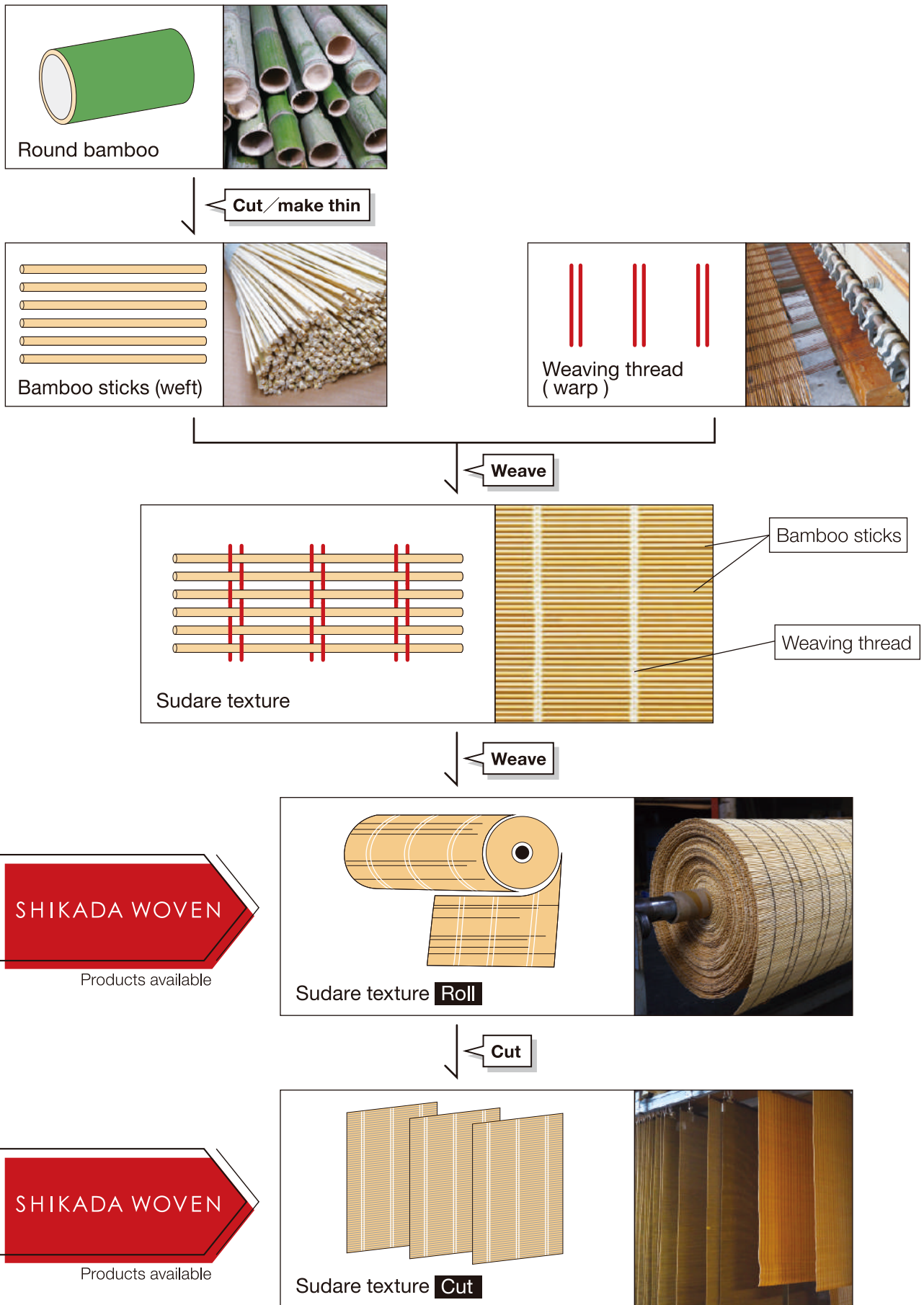
**3** References

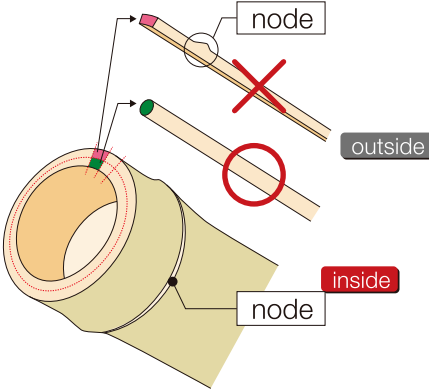
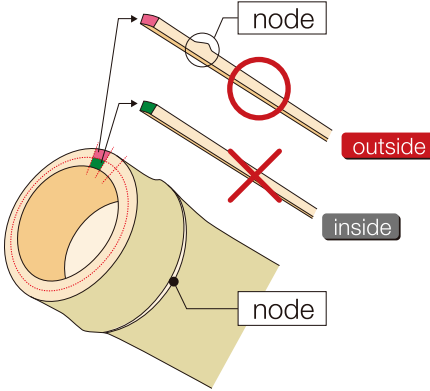
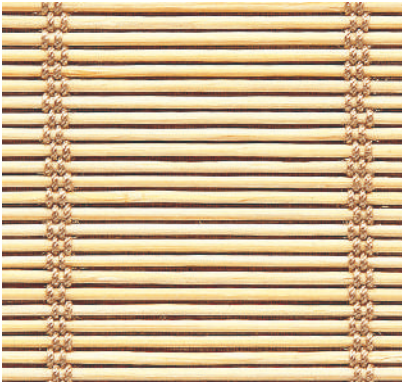
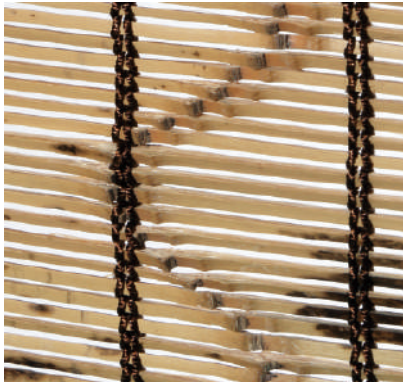


**4** Dimensions

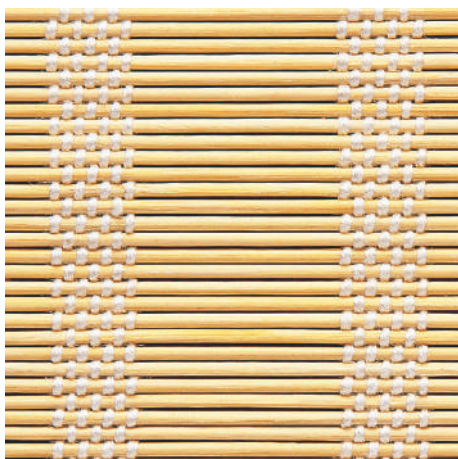
**5** Features

- 1 > Suspended ( vertical )
- 2 > Bend ( horizontal )
- 3 > Twist ( horizontal )
- 4 > Fireproof test
- 5 > Durability, Ageing and Color fading
- 6 > Optical transparency

# Production procedures for Sudare texture



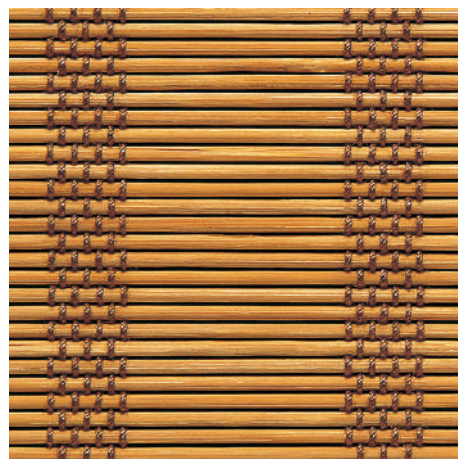
Brand	Shikisai	Manyo
Feature	Contemporary	Japan authentic
How to prepare bamboo sticks	 <p>Don't consider nodes</p>	 <p>Nodes are intentionally remained to create patterns</p>
Align nodes to create waving patterns	 <p>No nodes, no waves</p>	 <p>Node waves</p>
Manufacturing	machinery	handcraft
Production	20m / day	2m / day
Weaving Method	 <p>Motorized, Manual feeding</p>	 <p>Foot loom, Manual feeding</p>



410

Simple and natural design

Material : Bamboo 1.8φ (Unit : mm)  
Thread / thread color : 100% vinylon / white



415

Simple desing in smoke-dyed brown

Material : Bamboo 1.8φ carbonized  
Thread / thread color : 100% vinylon / brown



440

Standard basket-weave design that shows the scene behind the screen in a moiré pattern

Material : Bamboo skin 1.5φ  
Thread / thread color : 100% polyester / brown



441

Unique texture that shows the scene behind the screen in a moiré pattern, offered in brown

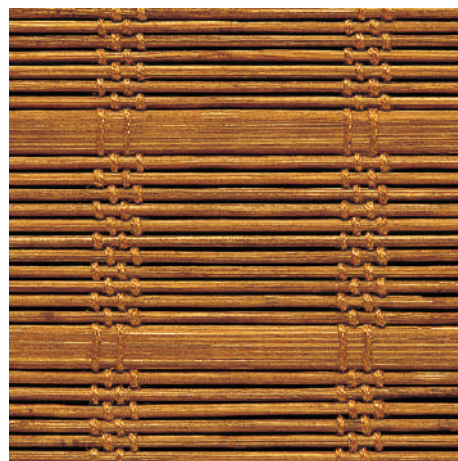
Material : Bamboo skin 1.5φ  
Thread / thread color : 100% polyester / brown



450

Design that gives a premium look to fine room décor

Material : Ramin 2.2φ & 6.3  
Thread / thread color : 100% vinylon / greenish brown



451

Checked texture that fits Japanese spaces

Material : Bamboo skin 1.5φ & 6.0  
Thread / thread color : 100% polyester / dark brown

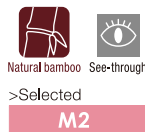


452

Dark colors will gradually turn to ecru with UV light.

Modern black checked design for room partitions

Material : Bamboo skin 1.5φ & 6.0  
Thread / thread color : 100% polyester / black



453

Delicate texture woven with the finest bamboo strands

Material : Bamboo skin 1.2φ  
Thread / thread color : 100% polyester / brown



454

Darker-colored, delicate design that gives a calm atmosphere

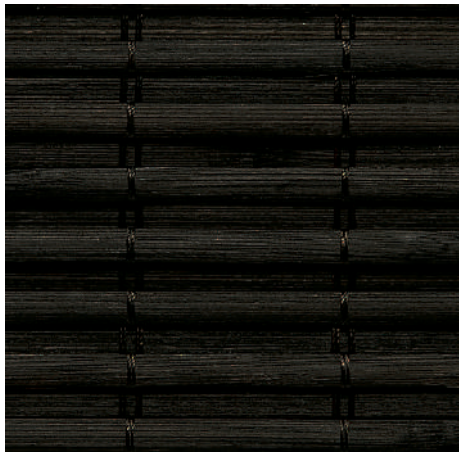
Material : Bamboo skin 1.2φ  
Thread / thread color : 100% polyester / dark brown



455

Layered weave that cannot be seen through, though it does let some light through. Perfect for private space.

Material : Bamboo skin 5.0 (layered weave)  
Thread / thread color : 100% polyester / dark brown

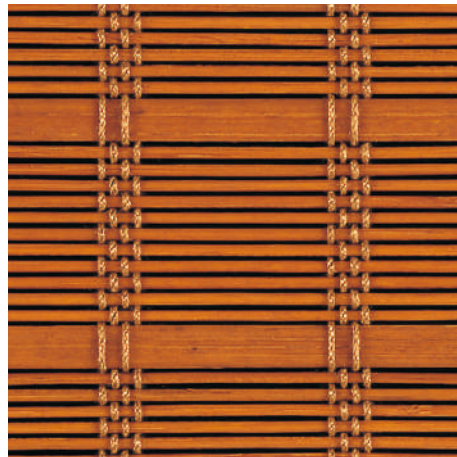


456

Dark colors will gradually turn to ecru with UV light.

Layered weave that cannot be seen through, though it does let some light through. Ideal for room partitions.

Material : Bamboo skin 5.0 (layered weave)  
Thread / thread color : 100% polyester / black



457

Unique texture of vivid orange strands woven in a checked pattern

Material : Bamboo skin 1.5φ & 6.0  
Thread / thread color : 100% polyester / orange

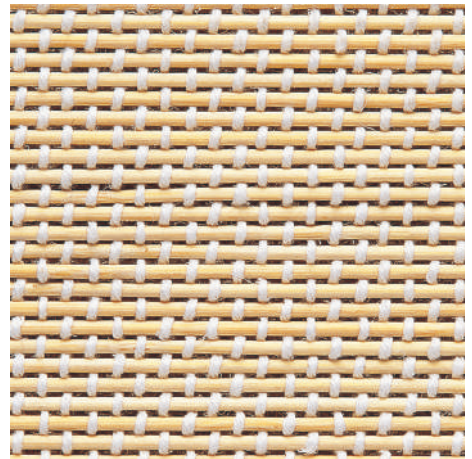
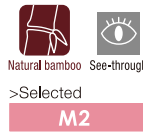
\* The color of all these products will fade or change with the passing of time as the products have been made by carbonizing natural materials or coloring with water-based paint.  
\* Depending on the production batch the colors may vary slightly.



# 458

Red-bean-colored design that fits modern and calm decors, that has a prominent premium feel.

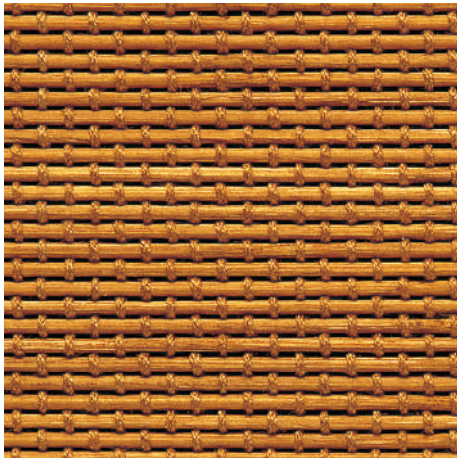
Material : Bamboo skin 1.5φ & 6.0  
Thread / thread color : 100% polyester / red bean color



# 461

Natural fabric-like color, perfect for western spaces

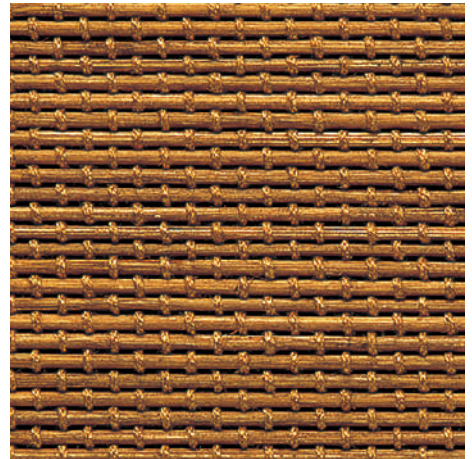
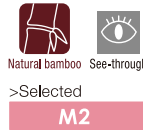
Material : Bamboo skin 1.8φ  
Thread / thread color : 100% polyester / white



# 462

Light brown, with a finely woven design that almost does not look like a sudare screen

Material : Bamboo skin 1.8φ  
Thread / thread color : 100% polyester / brown



# 463

A texture unlike sudare that suits Asian decors

Material : Bamboo skin 1.8φ  
Thread / thread color : 100% polyester / brown



# 464

Fashionable sudare with a look of a modern fabric

Material : Bamboo skin 1.8φ  
Thread / thread color : 100% polyester / dark brown



# 465

Non see-through, next to 455 and 456. Light grey. Ideal for room partitions and decors.

Material : Natural bamboo 5 mm  
Thread / thread color : 100% polyester / beige





>Selected  
M2



## 466

Non see-through, next to 455 and 456. Basic brown.  
Ideal for room partitions and around windows.

Material : Natural bamboo 5 mm  
Thread / thread color : 100% polyester / beige



>Selected  
M2



## 467

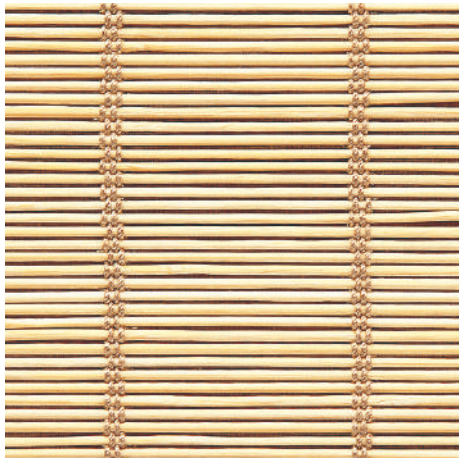
Modern black, accented with beige threads.  
Ideal for room partitions.

Dark colors will gradually turn to ecru with UV light.

Material : Natural bamboo 5 mm  
Thread / thread color : 100% polyester / beige



>Selected  
M2



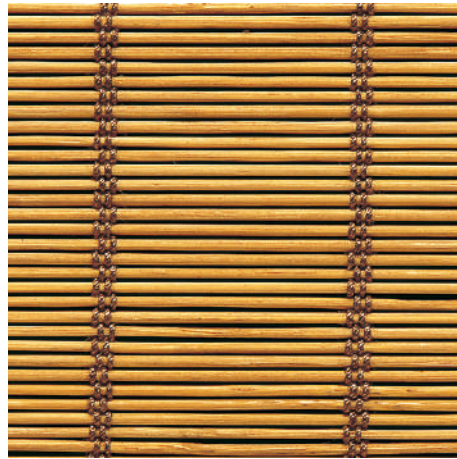
## 480

Orthodox design that best fits Japanese decor

Material : Bamboo skin 1.5φ  
Thread / thread color : 100% vinylon / beige



>Selected  
M2



## 481

Standard bamboo sudare design with a premium look

Material : Bamboo skin 1.5φ  
Thread / thread color : 100% vinylon / dark brown



## 482

Orthodox and standard wood-panel sudare texture

Material : Ramin 2.2φ & 6.3  
Thread / thread color : 100% vinylon / beige



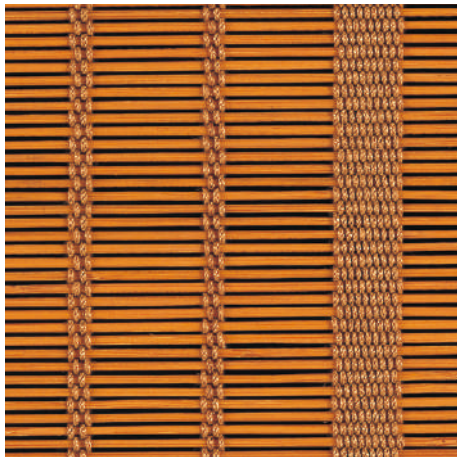
## 483

Most standard wood-panel sudare design

Material : Ramin 2.2φ & 6.3  
Thread / thread color : 100% vinylon / dark brown



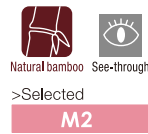
\* Please note that the uneven colors of the bamboo are part of its natural character, as bamboo contains a large amount of oil which makes even dyeing difficult.



# 485

Modern design with vertical borders. Vivid color, perfect for stylish spaces.

Material : Bamboo skin 1.5φ  
Thread / thread color : 100% polyester / orange



# 486

Red-bean colored vertical border pattern, for modern spaces with a high-end look.

Material : Bamboo skin 1.5φ  
Thread / thread color : 100% polyester / red bean color

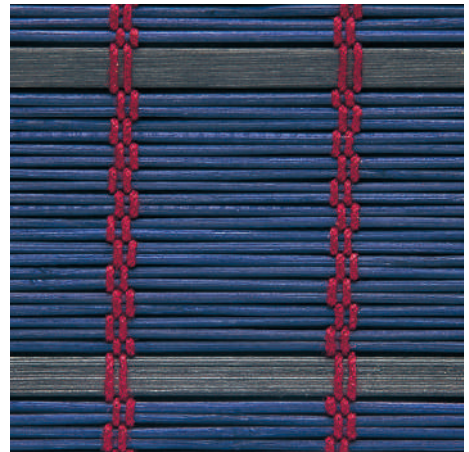
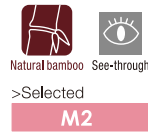


# 487

A design that combines matcha and brown-colored bamboo strands, ideal for room partitions.

Material : Bamboo skin 1.5φ (matcha) & 6.0 (flat / brown)  
Thread / thread color : 100% polyester / black

Dark colors will gradually turn to ecru with UV light.

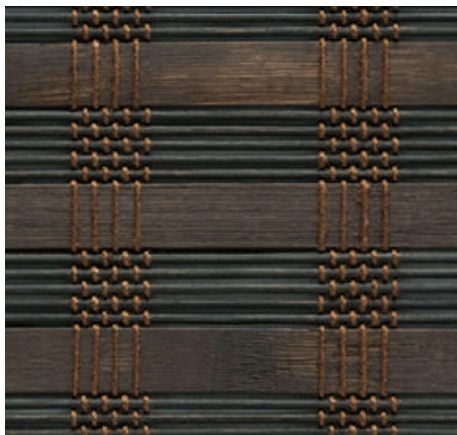
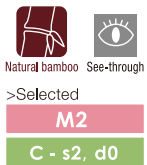


# 488

A creative indigo-based design with Kurume-style ikat motifs, bringing out the basket weave appearance. Ideal for room partitions.

Material : Bamboo skin 1.5φ (indigo) & 6.0 (flat / black)  
Thread / thread color : 100% polyester / dark red

(Basket-weave) Dark colors will gradually turn to ecru with UV light.

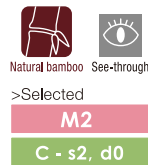


# 491

A modern texture that combines 12 mm-wide bamboo strands and fine strands. Ideal for room partitions.

Material : Natural bamboo 12 mm + bamboo skin 1.5φ  
Thread / thread color : 100% polyester / brown plain-weave

\*The texture image is zoomed out by about 80%. Dark colors will gradually turn to ecru with UV light.

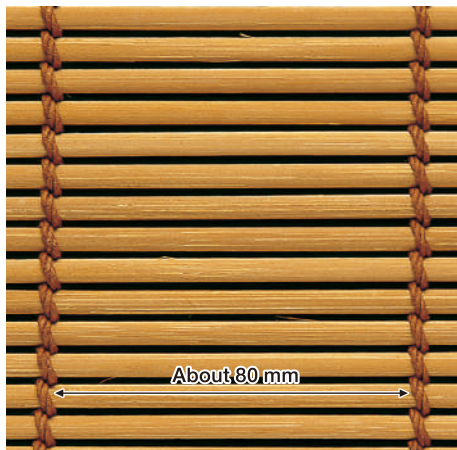
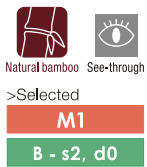


# 492

Standard design with wide slats, oozing chic. Ideal for room partitions.

Material : Natural bamboo 12 mm + bamboo skin 1.5φ  
Thread / thread color : 100% polyester / brown plain-weave

\*The texture image is zoomed out by about 80%. Dark colors will gradually turn to ecru with UV light.



\*The image of the texture is of a size approximately 60% of the actual product.

## 507

**Unique and coarse texture, woven with thick bamboo strands**

Material : Thick carbonized bamboo  
Thread / thread color : 100% cotton / brown



\*The image of the texture is of a size approximately 60% of the actual product.

## 508

**Highly resilient material, woven with thin, whole unskinned bamboos.**

Material : Suzutake bamboo  
Thread / thread color : 100% polyester / brown



\*The image of the texture is of a size approximately 60% of the actual product.

## 509

**Super thick bamboo of which only the roots are used.**

Material : Suzutake bamboo  
Thread / thread color : 100% nylon / dark brown



\*The image of the texture is of a size approximately 60% of the actual product.

## 514

**An orthodox exterior sudare, made by weaving highly resilient bamboo skin using a traditional technique**

Material : Bamboo skin 2.0φ  
Thread / thread color : 100% cotton / gray



\*The image of the texture is of a size approximately 60% of the actual product.

## 515

**Exterior sudare made with highly insect-proof, carbon-colored bamboo strands**

Material : Carbonized bamboo skin 2.0φ  
Thread / thread color : 100% cotton / gray



### 101

Warps : Yosefu / 100% silk (brown)  
 Weaving method : Ippon-gaeshi  
 Node alignment : Chidori-bushi

\*The material used is natural bamboo, so the texture of material in each sudare is different.



### 300

Warps : Yosefu / 100% cotton (white)  
 Weaving method : Ippon-gaeshi  
 Node alignment : Futatsu-bushi



### 330

Warps : Shibufu / 100% cotton (white)  
 Weaving method : Ippon-gaeshi  
 Node alignment : Hitotsu-bushi or futatsu-bushi



### 340BR

Warps : Shibufu / 100% cotton (brown)  
 Weaving method : Ippon-gaeshi  
 Node alignment : Chidori-bushi



### 500S

>Selected **M2**

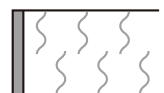
Warps : Rokubufu / 100% cotton (white)  
 Weaving method : Ippon-gaeshi  
 Node alignment : Angular  
 (see the image below)

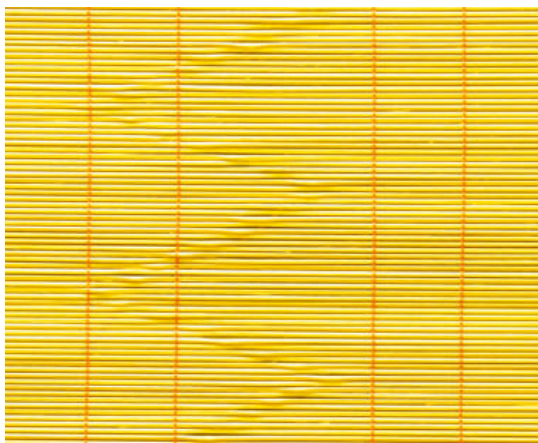


### 500W

>Selected **M2**

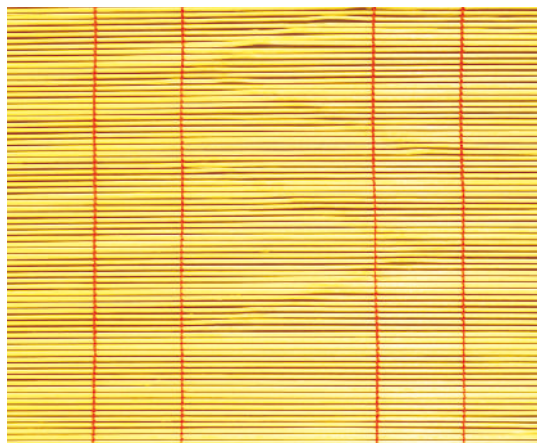
Warps : Rokubufu / 100% cotton (white)  
 Weaving method : Ippon-gaeshi  
 Node alignment : Rounded  
 (see the image below)





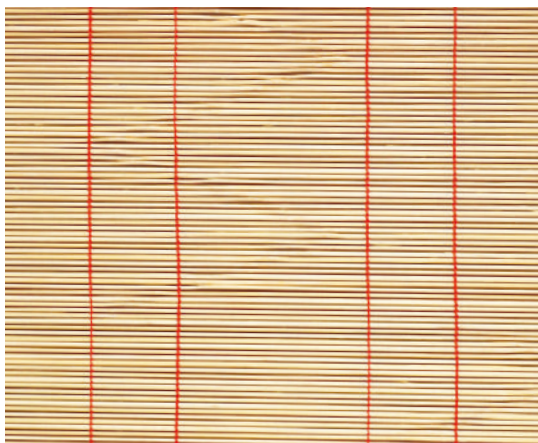
### 600A

Warps : Rokubufu / 100% cotton (red)  
 Weaving method : Ippon-gaeshi  
 Node alignment : "A" (right figure)



### 600B

Warps : Rokubufu / 100% cotton (red)  
 Weaving method : Ippon-gaeshi  
 Node alignment : "B" (right figure)

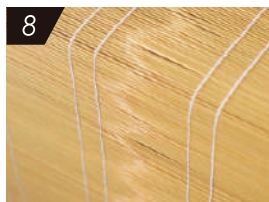
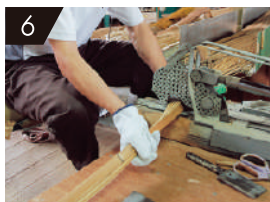
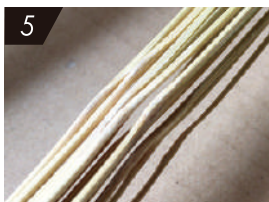


### 630A

Warps : Rokubufu / 100% cotton (red)  
 Weaving method : Ippon-gaeshi  
 Node alignment : "A" (right figure)



## MANYO Process



\* The image of the texture is of a size approximately 30% of the actual product.

## Shikisai

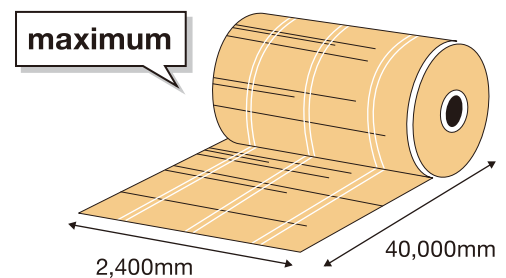
Available specifications

Element	Item	Minimum	Maximum	Notes
Texture	Width	300 mm <sup>(*1)</sup>	2,400 mm <sup>(*2)</sup>	
	Height	300 mm <sup>(*1)</sup>	40,000 mm	Some fabrics have a winding height of less than 30,000 mm.
Bamboo sticks	Diameter	φ1.2 mm	12 mm	Cross-cut section of sticks is circular or board-like
Warps	Thickness	approx. 1 mm	4 mm	
Interval	Width	10 mm	80 mm	Interval of two warps
Manufacturing Tolerance	Width	0 mm	10 mm	
	Height	0 mm	5 % <sup>(*3)</sup>	

(\*1) Sudare texture can also be supplied in widths of less than 300 mm. The price will be the same as the price for 300 mm width.

(\*2) It depends on the reference of texture (→ SHIKISAI 02)

(\*3) 5% of the height of texture maximum



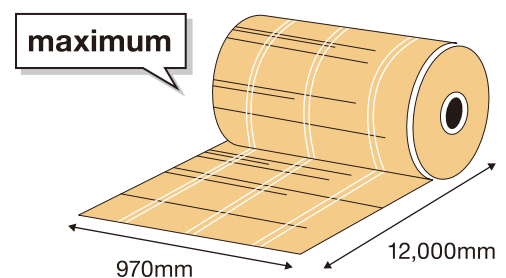
## Manyo

Available specifications

Element	Item	Minimum	Maximum	Notes
Texture	Width	300 mm <sup>(*4)</sup>	970 mm	Available up to 2,400 mm in some cases
	Height	300 mm <sup>(*4)</sup>	12,000 mm	
Bamboo sticks	Diameter	1.4 mm	1.7 mm	Cross-cut section of sticks is circular elliptical or board-like
Warps	Thickness	0.7 mm	1.3 mm	
Interval	Width	2 mm	18 mm	Interval of two warps
Manufacturing Tolerance	Width	0 mm	10 mm	
	Height	0 mm	5 % <sup>(*5)</sup>	

(\*4) Sudare texture can also be supplied in width of less than 300 mm. The price will be the same as the price for 300 mm width.

(\*5) 5% of the height of texture maximum



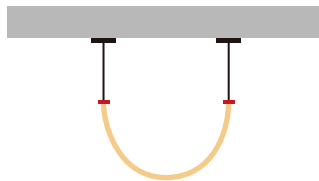
## 1 > Suspended ( vertical )

Suspended gravitationally from ceiling, you see the arch of Shikada Woven. Brackets, Wires, mounting metals and weight bars are required.

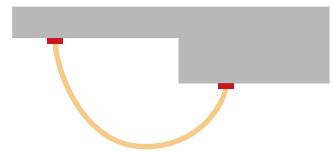
① Suspended from ceiling



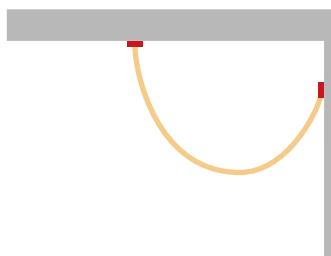
② Wires



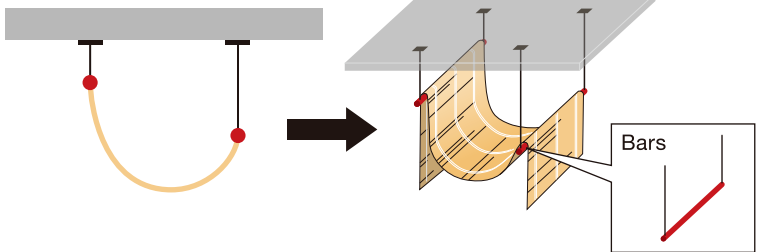
③ Suspended from uneven parallel ceilings



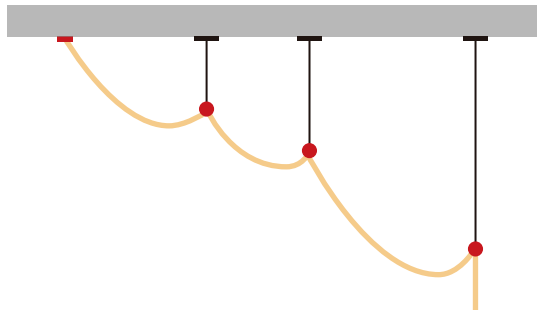
④ To the wall



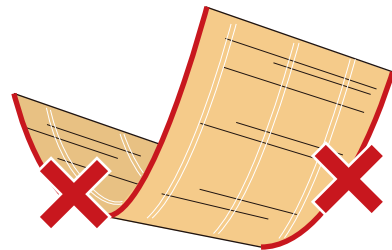
⑤ Suspended horizontal bars



⑥ Wires & uneven parallel bars



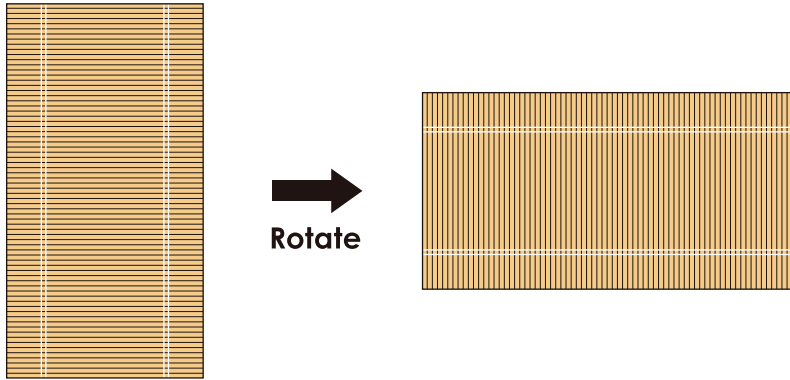
> We don't recommend you to support both sides of the texture to fix its shape.



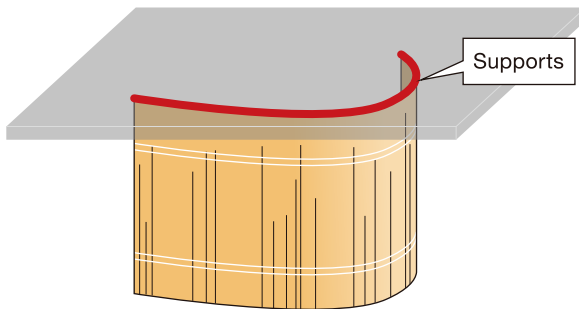
## 2 > Bend ( horizontal )

Rotate the texture 90 degrees.

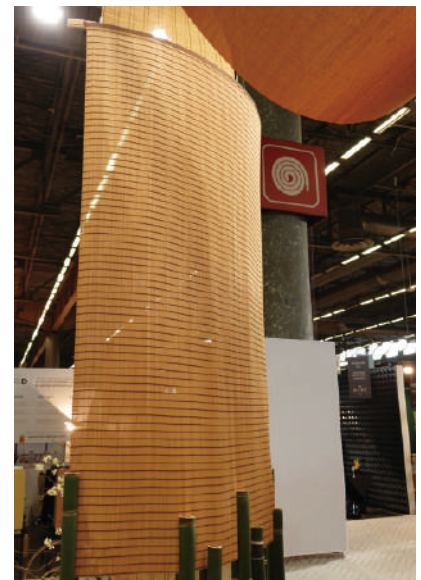
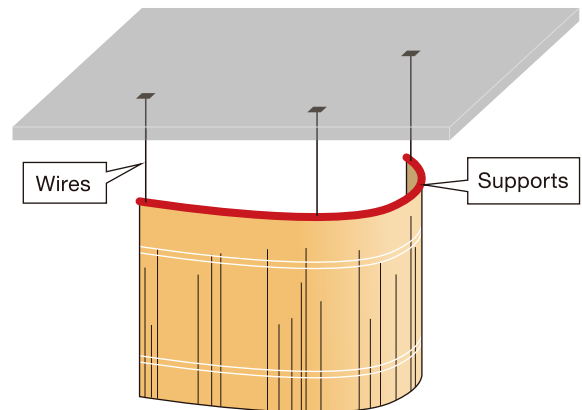
Prepare the arch shaped supports and fix the texture to them or tape the texture to them by velcro. Unique smooth curves of Shikada Woven are available.



① Fix to ceiling



② Wires





## 3 > Twist ( horizontal )

You can twist the texture Horizontally.

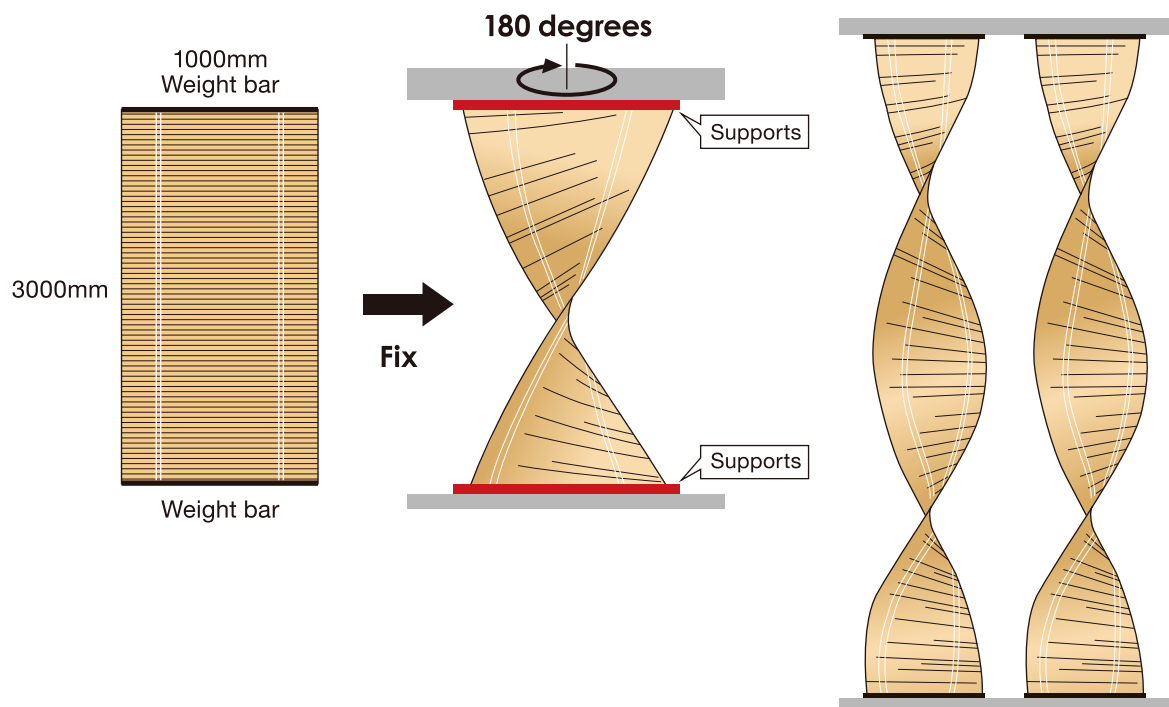
Fix the top and bottom of the texture by weight bars.

Suspended gravitationally from ceiling. And please fix the bottom to the floor.

You can twist maximum 180 degrees in the case of width of texture is 1000mm and the height of texture is 3000mm. The less width of the texture is, the more you can twist.

You can see the shapes like double helix structure of DNA.

\*May not be available depending on texture types and width.



## 4 > Fireproof test

A French laboratory FCBA has executed fireproof tests (Classement M1 / M2) of Shikada Woven. Shikada Woven is a first product made of bamboo that is certificated as Classement M1 all over the world.

**M1** Reference 507 (Shikisai)

**M2** Reference 410, 415, 440, 441, 480, 481, 461, 462, 463, 464, 451, 452, 457, 458, 453, 454, 455, 456, 465, 466, 467, 485, 486, 487, 488, 491, 492, 500S and 500W.

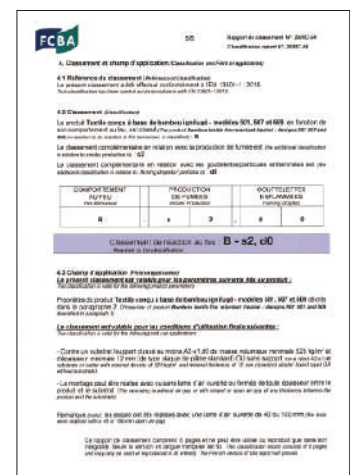


The same laboratory has also conducted fireproof tests of EUROCLASS for Shikada Woven.

With our fireproof product, the usability of our natural material is expanded to meet variety of your demands.

B - s2, d0 : Reference 507 and 509

C - s2, d0 : Reference 491 and 492

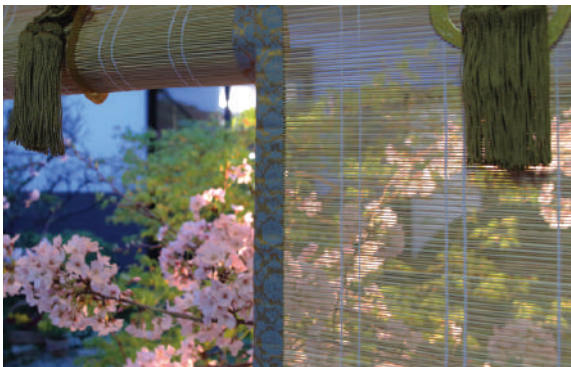


## 5 > Durability, Ageing and Color fading

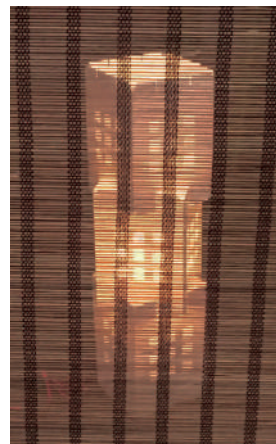


Shikada possesses a Sudare made before more than 100 years. We use natural bamboos, so the color of all the textures will change to candy and glossy through about twenty years. Please enjoy the change in color of the texture through the 100 years.

## 6 > Optical transparency



You see the various views through the textures according to the difference of brightness between the front and the back of the textures. You can enjoy the various views every day in the morning, afternoon and the evening. And every texture also has its own optical transparency.



The Manyo texture of Shikada Woven is a natural texture made from bamboos grown in Japan. It is made by slicing bamboo sheath to thin and long stick then manually weave each stick to form a texture. There are round nodes on bamboo sheath. The nodes are arranged in weaving process to make a wave pattern. The wave pattern is beautifully visible when a texture is fully dropped.

### Catalogs

➔ <https://shikada.co.jp/en/catalogs-drawings/>



### Contact

➔ <https://shikada.co.jp/en/contact/>





# SHIKADA SANGYO INC.

428 Ohta, Hirokawa-machi, Yame-gun, Fukuoka, 834-0114, Japan  
TEL +81-943-32-1141 E-mail : intl@shikada.co.jp  
WEB > <https://shikada.co.jp/en/>



[shikada.co.jp/en/](https://shikada.co.jp/en/)

As of August 2023